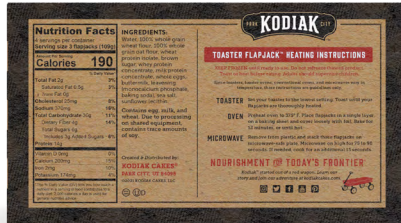


FROZEN



Nutrition Facts

4 Servings per container
Serving size 2 waffles (76g)

Amount Per Serving
Calories 250

	% Daily Value*
Total Fat 11g	15%
Saturated Fat 1g	6%
Trans Fat 0g	
Cholesterol 5mg	2%
Sodium 360mg	16%
Total Carbohydrate 25g	9%
Dietary Fiber 3g	12%
Total Sugars 7g	
Includes 6g Added Sugars	11%
Protein 12g	
Vitamin D 0mcg	0%
Calcium 60mg	%
Iron 1.7mg	10%
Potassium 180mg	%

*The % Daily Value (DV) tells you how much a nutrient in a serving of food contributes to a daily diet. 2,000 calories a day is used for general nutrition advice.

TOASTER FLAPJACKS POWER FLAPJACKS BUTTERMILK

INGREDIENTS: 100% whole grain wheat flour, water, canola oil, 100% whole grain oat flour, cane sugar, blueberries, whey protein concentrate, sunflower lecithin, wheat protein isolate, whey protein isolate, wheat gluten, egg whites, buttermilk, leavening (sodium acid pyrophosphate and sodium bicarbonate), sea salt, guar gum, natural flavors.

Contains egg, milk, and wheat. Due to processing on shared equipment, contains trace amounts of soy.

96 WAFFLES

8 BOXES / 12 WAFFLES

SHELF LIFE: 1.5 YEARS

STORAGE TEMPERATURE: FROZEN

CASE PACK SPECIFICATIONS

ITEM NUMBER	1323	UNIT DIMENSIONS LxWxH	8.50 x 3.44 x 4.69
CASE UPC	10705599013239	CASE DIMENSIONS WxDxH	19.63 x 9.13 x 8.00
UNIT UPC	705599013225	CASE CUBE	.83
CASE PACK/SIZE	8 / 15.38 oz	CASES PER PALLET	50 cases
CASE WEIGHT NET/GROSS (LBS)	7.69 / 8.9 lbs	PALLET TIE/HIGH	10 x 5 cases
NET WEIGHT	15.38 oz	INDIVIDUAL SCANNABLE UPC	